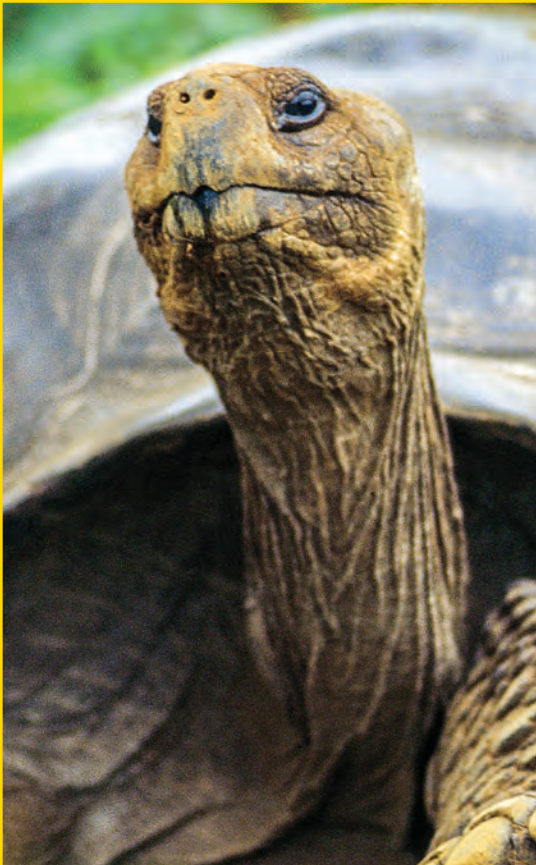




Oregon State University  
Alumni Association

# EXPLORING GALÁPAGOS



EXPEDITIONS

March 5-14, 2027 | Aboard the *National Geographic Endeavour II*

**SPECIAL OFFER: 5% GROUP SAVINGS**



## Dear OSU Alumni and Friends,

The collection of islands known as the Galápagos is, in the words of Charles Darwin, “a little world within itself.” Here, prehistoric-looking marine iguanas bask on stark volcanic landscapes, barking sea lions loll about on white-sand beaches and magnificent frigatebirds nest in the silvery palo santo trees.

We invite you to witness the iconic creatures and habitats of the Galápagos for yourself on an incredible voyage aboard the *National Geographic Endeavour II*. Equipped with kayaks, stand-up paddleboards, a fleet of Zodiacs and a custom-designed glass-bottom boat, this 52-cabin expedition ship is purpose-built to bring you unforgettable experiences. Paddle along rocky shores beside gliding sea turtles, snorkel with penguins and hike among blue-footed boobies. There will also be plenty of chances to spot marine life—like leaping dolphins and rays—from the comfort of the ship.

The tour operator for this program, Lindblad Expeditions, has spent decades exploring Galápagos and is well known for the exceptional travel experiences they offer in the archipelago. Their naturalists have a deep knowledge of island species and habitats that allows them to make the most of nature’s opportunities—which means you will enjoy adventure-filled days and amazing wildlife sightings. Many are also Galapagueños, providing an authentic connection to the region’s culture.

Please contact National Geographic-Lindblad Expeditions directly with all trip inquiries and to make a reservation. Their travel consultants are eager to take your call and answer your questions. Email [groups@expeditions.com](mailto:groups@expeditions.com), or call Lindblad Expeditions at **833-985-1261**.

Sincerely,

Your friends at the OSU Alumni Association

### *OSU Alumni Group Travel*

*The OSU Alumni Association group travel program promotes fellowship, education and enjoyment for alumni, their families and friends by providing attractive travel and lifelong learning opportunities. Membership in the OSU Alumni Association is required to travel with this program. If you are not a member, please call 877-678-2837 or join online at [ForOregonState.org/membership](http://ForOregonState.org/membership).*

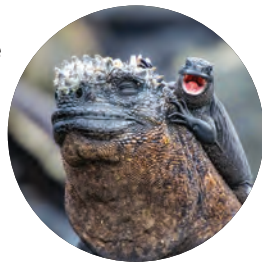


## Exploring Galápagos

10 Days | From \$7,193pp\*

March 5-14, 2027 | *National Geographic Endeavour II*

Few wildernesses are more iconic than the Galápagos Islands—the lava-sculpted realm that once played host to Charles Darwin and his living laboratory. Home to a menagerie of wild and wonderful creatures with no instinctive fear of humans, the archipelago’s untamed seas and shores still look much as they did when the legendary naturalist arrived nearly 200 years ago. Penguins welcome visitors while wizened marine iguanas sunbathe on volcanic rocks and giant tortoises roam through misty meadows. Discover these wild wonders and much more on an immersive adventure refined by National Geographic-Lindblad Expeditions over decades of voyaging to these magical isles.



**Day 1 • Quito or Guayaquil, Ecuador**

**Day 2 • Quito or Guayaquil / Galápagos**

**Days 3-8 • Exploring Galápagos**

This expedition includes visits to Santa Cruz and a careful selection of other diverse islands. The itinerary offers an optimal balance of wildlife, landscapes and experiences. All itineraries are subject to Galápagos National Park regulations.

**Day 9 • Galápagos / Disembark Ship / Quito or Guayaquil**

**Day 10 • Quito or Guayaquil**

## EXPEDITION HIGHLIGHTS

- Adventure by kayak, paddleboard, glass-bottom boat and Zodiac.
- Walk among wildlife unfazed by your presence: lounge on beaches with sea lions, marvel at huge colonies of marine iguanas and see nesting seabirds.
- Snorkel with sea lions, turtles and abundant fish in the protected waters of the Galápagos Marine Reserve.
- Observe giant Galápagos tortoises in the wild on an adventure in the highlands of Santa Cruz.
- With National Geographic Explorers-in-Training, an exclusive family program, kids and teens will learn about this fascinating part of the world—from “sneezing” iguanas to giant tortoises.



## *National Geographic Endeavour II*

This purpose-built expedition ship sails the Galápagos year-round and embodies the style of travel refined over decades of exploration here. Evoking the feel of both a sumptuous hotel and a scientific research vessel, she features an open-air observation deck, exceptional views and an impressive roster of exploration tools—all of which foster up-close and personal exploration.



## INCLUSIVE PRICING

---

- All accommodations aboard ship
- Excursions and hotels, as indicated in the itinerary
- Airport transfers for flights arriving and departing within the recommended window
- All meals as indicated in the itinerary, plus hors d'oeuvres and 24-hour access to snacks, premium coffees and teas, nonalcoholic beverages and filtered water
- Selection of exploration tools curated to the destination, such as kayaks, Zodiacs, etc.
- Presentations on your destination by expedition staff and expert guest speakers
- Gratuities to local guides, drivers and local tour escorts, where applicable
- The services of a medical professional where applicable
- Morning stretch classes and 24-hour access to exercise equipment where available
- 24-hour access to the lounge, library, observation decks and other shared spaces
- Complimentary reusable water bottle
- Park and site entrance fees, special access permits and port taxes

**Beer, Wine, Cocktails & Spirits:** Your bar tab is included. Premium wines and spirits are available for purchase.

**Complimentary Wi-Fi:** Wireless internet is offered through Speedcast and Starlink. Enjoy a complimentary basic Wi-Fi plan that accommodates email, messaging and social media apps. Upgrades are also available, ranging in price from \$25 per day to \$300 for the entire voyage.

## TERMS AND CONDITIONS

---

Prices quoted in this brochure are per person based on double-occupancy in USD. Prices quoted are valid at the time of printing, and are subject to change and availability at time of booking.

**COST INCLUDES:** All amenities listed in inclusive pricing above. Unused services or items included in this program are non-refundable.

**NOT INCLUDED:** Airfare (except flights when indicated as included and/or as required); pre- and post-expedition extensions; additional hotel nights; premium brand cocktails and spirits; crew gratuities; private transfers; enhanced and premium Wi-Fi plans aboard expedition fleet; laundry, spa treatments, and phone services; travel protection plans; passport, visa and immigration fees.

**ITINERARY MODIFICATIONS:** Itineraries, routing and speakers listed are correct at time of publication, and are subject to change.

**AIRFARE:** Airfare is not included in program pricing unless otherwise specified. International and domestic Ecuador flights must be ticketed separately. Round-trip internal flights between Guayaquil or Quito and the Galápagos are required and must be purchased through Lindblad Expeditions, with fares starting at \$570 per person. National Geographic-Lindblad Expeditions is happy to assist with international air arrangements for a \$50 per person service fee.

**RESERVATIONS AND DEPOSITS:** To confirm your place, an advance payment of 15% of the cabin fare, per person is payable by Visa, MasterCard, American Express, Discover or check. Receipt of advance payment indicates your acceptance of the terms and conditions.

**FINAL PAYMENT:** Due no later than 120 days prior to departure. Lindblad Expeditions reserves the right to cancel your reservation if payment has not been received by final payment due date.

**TRAVEL PROTECTION PLAN:** It is strongly recommended that you purchase a travel protection plan and medical insurance, which are available at an extra cost. Information will be sent upon registration.

**ENTRY AND VISA REQUIREMENTS:** Guests are advised to verify travel documents (passport/transit visa/entry visa) for the country(s) through which they are transiting and/or entering. Reliable and most current information regarding international travel can be found by contacting the consulate/embassy of the country(s) you are visiting or transiting through. We will not be responsible if you are denied entry or transit into a country if you are unable to provide valid documents as per the country's requirement.

**RESPONSIBILITY AND OTHER TERMS & CONDITIONS:** Certain provisions concerning, among other things, limitations of Lindblad Expeditions and National Geographic Expeditions' (a division of National Geographic Partners, LLC) liability for loss of property, injury, illness, or death during the voyage will be provided to all guests on the ship's ticket sent prior to departure, or upon request. By registering for a trip, the guest agrees to all such terms and conditions.

## CANCELLATION FEE POLICY (PER PERSON)

---

**120 or more days** prior to expedition start: **No penalty.** Advance Payment will be credited toward your next expedition\*  
**119-90 days** prior to expedition start: **50% of trip cost\*\***  
**89-0 days** prior to expedition start: **100% of trip cost\*\***

\*Advance payments will be credited in the form of a Lindblad Expeditions Travel Certificate, valid for 12 months from the date of cancellation, and which may only be applied towards final payment on any future booking.

\*\*Trip cost is total price paid including extensions, charter airfare and other additional services.

*This cancellation policy applies to expeditions, extensions and all other additional services. The effective date of a cancellation will be the date on which your cancellation notice is received. Note: Airline cancellation policies vary by carrier and type of fare used to issue your ticket.*

*Any revisions you make within the cancellation penalty period, such as departure date or choice of voyage, are subject to cancellation fees. The cancellation policy for certain longer voyages and holiday departures may vary due to high demand for these voyages. We strongly recommend purchasing a travel protection plan to protect yourself from fees in the event you need to cancel your reservation.*

*This institution is an equal opportunity provider.*

Lindblad Expeditions, LLC is a registered member of the CA Seller of Travel Program #2151120. Registration as a seller of travel does not constitute approval by the State of California. WA Seller of Travel Program #601134845 001 0001.

©2026 Lindblad Expeditions. Lindblad Expeditions and the Eye are the trademarks of Lindblad Expeditions. All rights reserved.

©2026 National Geographic Partners, LLC. All Rights Reserved.

NATIONAL GEOGRAPHIC and the Yellow Border are trademarks of National Geographic Society and used with permission.

**Photo Credits:** Ralph Lee Hopkins, Andrew Peacock, Michael S. Nolan, David Vargas, Marc Cappelletti.

# Reservation Form



Oregon State University  
Alumni Association

## Contact Information

---

**To register, please contact:**

Lindblad Expeditions  
11 W 42nd St Suite 22 B3  
New York, NY 10036

**Ph:** (833) 985-1261

**Fax:** (646) 390-2050

**E-mail:** groups@expeditions.com

## Exploring Galápagos

March 5-14, 2027

ABOARD THE *NATIONAL GEOGRAPHIC ENDEAVOUR II*

## Passenger Information

---

Please reserve \_\_\_\_ place(s).

Guest 1: \_\_\_\_\_  
*(Name as it appears on passport)*

Date of Birth: \_\_\_\_\_ M/F: \_\_\_\_\_

Guest 2: \_\_\_\_\_  
*(Name as it appears on passport)*

Date of Birth: \_\_\_\_\_ M/F: \_\_\_\_\_

Street Address: \_\_\_\_\_

City: \_\_\_\_\_ State: \_\_\_\_\_ ZIP: \_\_\_\_\_

Phone: \_\_\_\_\_ Email: \_\_\_\_\_

Please indicate choice of cabin category in order of preference:

1st choice: \_\_\_\_\_ 2nd choice: \_\_\_\_\_

Accommodations:  Double  Single  Twin share with a friend  
 Share with roommate assigned by tour operator.

Planned arrival/departure city:  Quito  Guayaquil

Advance Payment Information: 15% of the cabin fare per person.

If paying by check, please make payable to: Lindblad Maritime Enterprises, Ltd.  
Enclosed is my advance payment of \$ \_\_\_\_\_

If paying by credit card, we will contact you to finalize your booking and collect payment information.

**Interested in extending your travels?** Be sure to check the MYLEX portal after your booking is confirmed to explore available options.



## Exploring Galápagos

March 5-14, 2027

Aboard National Geographic Endeavour II

### SPECIAL GROUP SAVINGS:

**Enjoy 5% savings when traveling with the OSU Alumni Association.**

See inside for details.

*Pioneering Responsible Exploration: From our consistent quest to improve our practices to offsetting 100% of our carbon emissions, supporting conservation, science, and education initiatives around the planet, and investing in the communities in the places we explore, we are guided by our commitment to explore responsibly.*

*Printed on 100% recycled content paper with soy-based inks. We recommend that you pass this along for others to enjoy or recycle.*



Oregon State University  
**Alumni Association**

204 CH2M  
HILL Alumni Center  
Corvallis, Oregon 97331-6303

PR-SRT STD  
U.S. POSTAGE  
PAID  
LINDBLAD  
EXPEDITIONS

GRP-OSU-GALAZ7